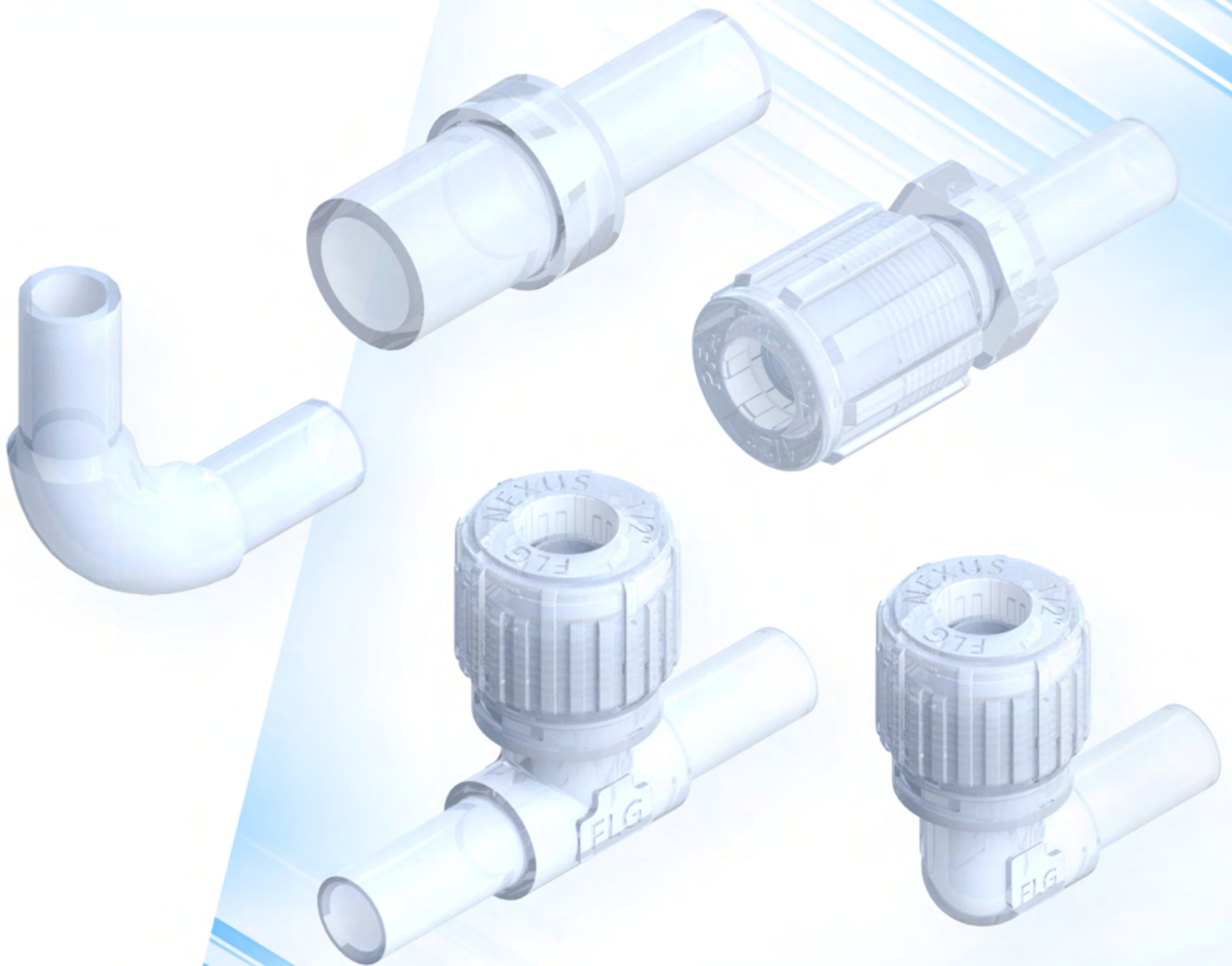




FIT-LINE[®]
GLOBAL

WeldConnect[™]

HIGH PURITY PFA • & PVDF FITTINGS



For more information, please visit: Fit-LineGlobal.com



TABLE OF CONTENTS

| | | | |
|--|----|---|----|
| Weld Connect Introduction..... | 3 | Nexus Connect Weld Connectors Introduction..... | 11 |
| Weld Straight Reducer (Pipe x Pipe) | 4 | Weld Straight Connector (Pipe x Male)..... | 12 |
| Weld Pipe Cap (Pipe) | 4 | Weld Straight Connector (TightINSERT) (Pipe x Female)..... | 13 |
| Weld Union Elbow (Pipe x Pipe)..... | 5 | Weld Straight Connector (Tube x Male) | 13 |
| Weld Union Tee (Pipe x Pipe) | 5 | Weld Elbow Connector (Tube x Male)..... | 14 |
| Weld Male Adapter (Pipe x MNPT) | 6 | Weld Elbow Connector (TightINSERT) (Tube x Female) | 14 |
| Weld Female Adapter (Pipe x FNPT) | 6 | Weld Tee Connector (Tube x Male x Tube)..... | 15 |
| Weld Straight Reducer (Tube x Tube) | 7 | Weld Tee Connector (TightINSERT) (Tube x Female x Tube)..... | 15 |
| Weld Elbow (Tube x Tube) | 7 | Weld Cross Connector (Male x Tube x Male x Tube)..... | 16 |
| Weld Elbow Reducer (Tube x Tube) | 8 | Flare Link Weld Connectors Introduction..... | 17 |
| Weld Elbow Sweep (Tube x Tube)..... | 8 | Weld Straight Connector (Pipe x Male Flare)..... | 18 |
| Weld Tee (Tube x Tube x Tube)..... | 9 | Weld Straight Connector (TightFLARE) (Pipe x Female Flare)..... | 19 |
| Weld Tee Reducer (Tube x Tube x Tube)..... | 9 | Weld Elbow Connector (Pipe x Male Flare)..... | 20 |
| Weld Cross (All Tube) | 10 | Weld Elbow Connector (TightFLARE) (Pipe x Female Flare)..... | 21 |
| Weld Cross Reducer (All Tube) | 10 | WELDED Systems Fabricated Manifolds | 22 |
| | | The Fit-Line Global Story | 23 |
| | | Warranty & Goods | 25 |

For over 30 years, Fit-Line Global has designed and manufactured a wide range for PFA and PVDF flare fittings that are SEMI-F57-0120 compliant.

FEATURES AND BENEFITS

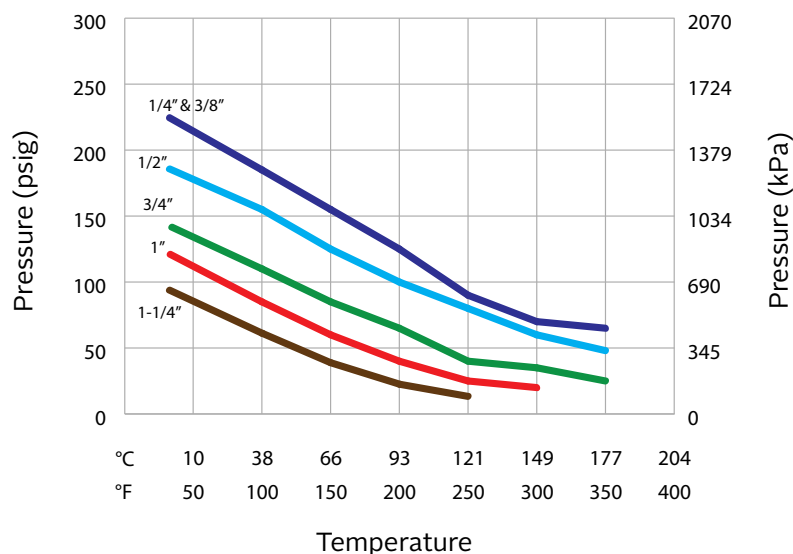
- High Purity Components**
 All wetted components are molded from virgin ultra high purity PFA material and cleaned using a proprietary 5-stage washing system within a certified class 1000 clean room.
- Packaging**
 Each fitting is double poly bagged inside a certified class 1000 clean room per SEMI 57-0120.
- Traceability**
 Fittings are traceable from raw material, manufacturing to packaging, per SEMI 57-0120. Each fitting is labeled with part number, description, and lot number.

SEMICONDUCTOR APPLICATIONS

- Bulk chemical and slurry delivery
- Chemical and slurry blend and distribution
- Chemical-Mechanical Polishing (CMP)
- High-temperature wet deaning processes
- Photolithography
- Wet etching

ACCEPTABLE OPERATING RANGE

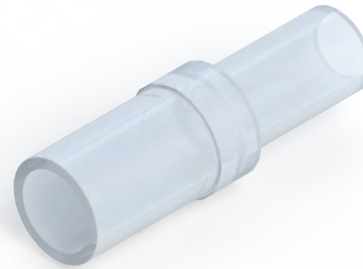
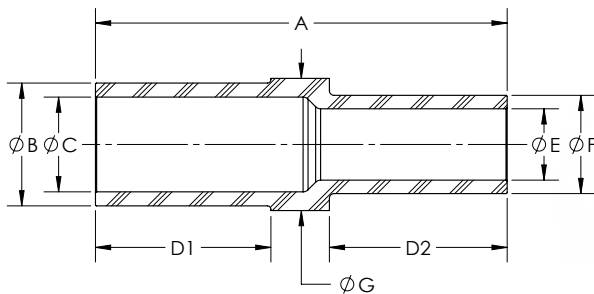
**PFA Fittings
Pressure vs. Temperature**



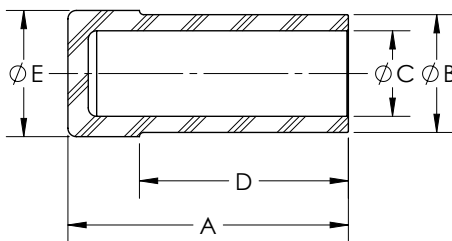
Pressure ratings based on the following tube wall thickness:

| Flare Size | Tube Wall Thickness |
|------------|---------------------|
| 1/4" | .047" |
| 3/8" | .063" |
| 1/2" | .063" |
| 3/4" | .063" |
| 1" | .063" |
| 1-1/4" | .075" |

| Weld Straight Reducer (Pipe x Pipe) | | | | | | | | | | |
|--|-----------|---------|------|------|------|------|------|-----|------|------|
| PFA Part No. | Pipe Size | Orifice | A | B | C | D1 | D2 | E | F | G |
| WSR8P4P | 1/2 x 1/4 | .35 | 2.75 | .84 | .61 | 1.50 | .75 | .35 | .54 | .83 |
| WSR12P4P | 3/4 x 1/4 | .35 | 2.75 | 1.05 | .81 | 1.50 | .75 | .35 | .54 | 1.11 |
| WSR12P8P | 3/4 x 1/2 | .61 | 3.50 | 1.05 | .81 | 1.50 | 1.50 | .61 | .84 | 1.11 |
| WSR16P4P | 1 x 1/4 | .35 | 3.50 | 1.32 | 1.03 | 1.50 | .75 | .35 | .54 | 1.41 |
| WSR16P8P | 1 x 1/2 | .61 | 3.50 | 1.32 | 1.03 | 1.50 | 1.50 | .61 | .84 | 1.41 |
| WSR16P12P | 1 x 3/4 | .81 | 3.50 | 1.32 | 1.03 | 1.50 | 1.50 | .81 | 1.05 | 1.41 |

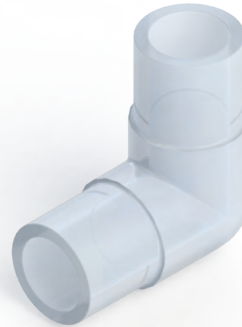
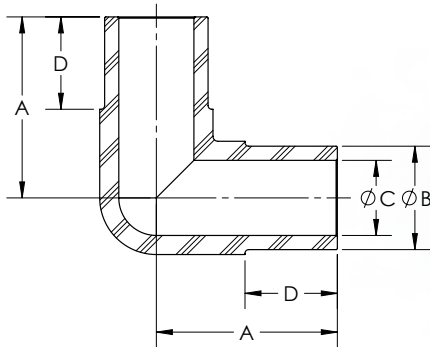


| Weld Pipe Cap (Pipe) | | | | | | |
|-------------------------|-----------|------|------|------|------|------|
| PFA Part No. | Pipe Size | A | B | C | D | E |
| WCAP4 | 1/4 | .75 | .54 | .35 | .55 | .62 |
| WCAP8 | 1/2 | 2.00 | .84 | .61 | 1.49 | .90 |
| WCAP12 | 3/4 | 2.01 | 1.05 | .81 | 1.49 | 1.11 |
| WCAP16 | 1 | 2.01 | 1.32 | 1.03 | 1.49 | 1.43 |



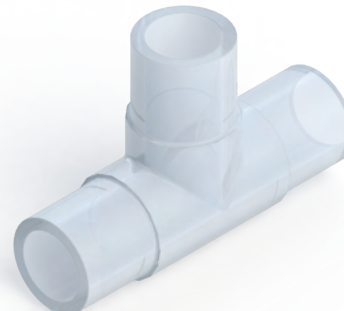
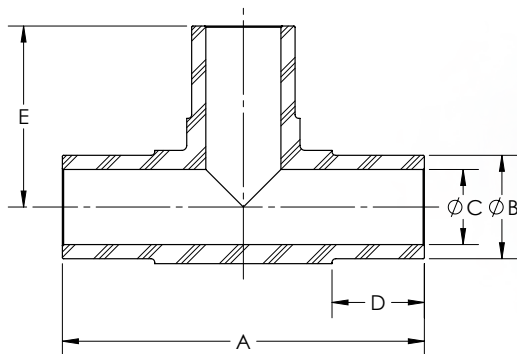
| Weld Union Elbow (Pipe x Pipe) | | | | | |
|-----------------------------------|-----------|------|------|------|------|
| PFA Part No. | Pipe Size | A | B | C | D |
| WUE4P | 1/4 | 1.27 | .54 | .35 | .75 |
| WUE8P | 1/2 | 1.47 | .84 | .61 | .75 |
| WUE8PX | 1/2 | 2.22 | .84 | .61 | 1.50 |
| WUE12P | 3/4 | 1.55 | 1.05 | .81 | .75 |
| WUE12PX | 3/4 | 2.30 | 1.05 | .81 | 1.50 |
| WUE16P | 1 | 1.50 | 1.32 | 1.03 | .75 |
| WUE16PX | 1 | 2.18 | 1.32 | 1.03 | 1.48 |

X = Extended

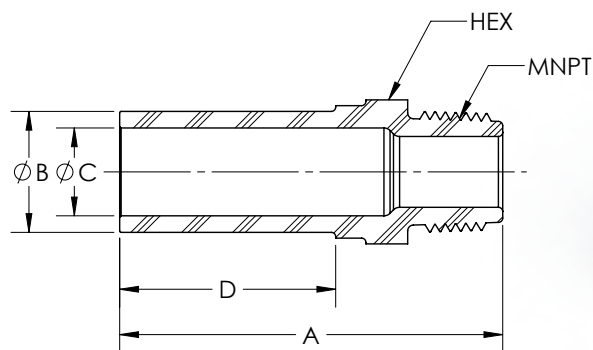


| Weld Union Tee (Pipe x Pipe) | | | | | | |
|---------------------------------|-----------|------|------|------|------|------|
| PFA Part No. | Pipe Size | A | B | C | D | E |
| WUT4P | 1/4 | 2.54 | .54 | .35 | .75 | 1.27 |
| WUT8P | 1/2 | 2.94 | .84 | .61 | .75 | 1.47 |
| WUT8PX | 1/2 | 4.44 | .84 | .61 | 1.50 | 2.22 |
| WUT12P | 3/4 | 3.10 | 1.05 | .81 | .75 | 1.55 |
| WUT12PX | 3/4 | 4.60 | 1.05 | .81 | 1.50 | 2.30 |
| WUT16P | 1 | 3.00 | 1.32 | 1.03 | .75 | 1.50 |
| WUT16PX | 1 | 4.36 | 1.32 | 1.03 | 1.48 | 2.18 |

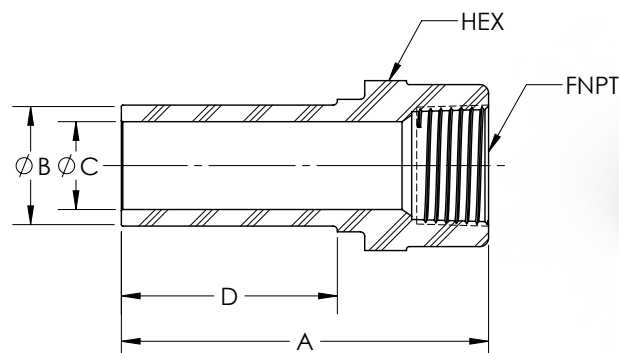
X = Extended



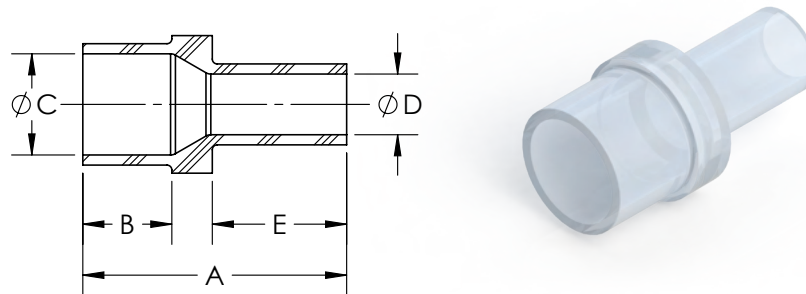
| Weld Male Adapter (Pipe x MNPT) | | | | | | | | |
|------------------------------------|-----------|-----------|---------|------|------|------|------|--------|
| PFA Part No. | Pipe Size | MNPT Size | Orifice | A | B | C | D | Hex |
| WMA4P-4 | 1/4 | 1/4 | .28 | 1.39 | .54 | .35 | .55 | 5/8 |
| WMA8P-6 | 1/2 | 3/8 | .36 | 2.56 | .84 | .61 | 1.49 | 1 |
| WMA8P-8 | 1/2 | 1/2 | .51 | 2.66 | .84 | .61 | 1.49 | 1 |
| WMA12P-8 | 3/4 | 1/2 | .51 | 2.66 | .84 | .61 | 1.49 | 1-3/16 |
| WMA12P-12 | 3/4 | 3/4 | .66 | 2.68 | 1.05 | .81 | 1.49 | 1-3/16 |
| WMA16P-16 | 1 | 1 | .94 | 2.85 | 1.32 | 1.03 | 1.49 | 1-7/16 |



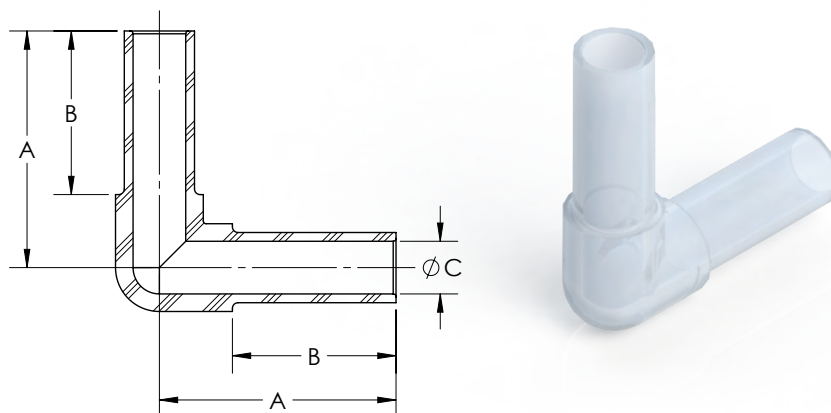
| Weld Female Adapter (Pipe x FNPT) | | | | | | | | |
|--------------------------------------|-----------|-----------|---------|------|------|------|------|--------|
| PFA Part No. | Pipe Size | FNPT Size | Orifice | A | B | C | D | Hex |
| WFA4P-4 | 1/4 | 1/4 | .34 | 1.58 | .54 | .35 | .75 | 3/4 |
| WFA8P-6 | 1/2 | 3/8 | .36 | 2.49 | .84 | .35 | 1.49 | 1 |
| WFA8P-8 | 1/2 | 1/2 | .51 | 2.56 | .84 | .61 | 1.49 | 1-3/16 |
| WFA12P-12 | 3/4 | 3/4 | .79 | 2.69 | 1.05 | .81 | 1.49 | 1-7/16 |
| WFA16P-16 | 1 | 1 | .99 | 2.83 | 1.32 | 1.03 | 1.49 | 1-5/8 |



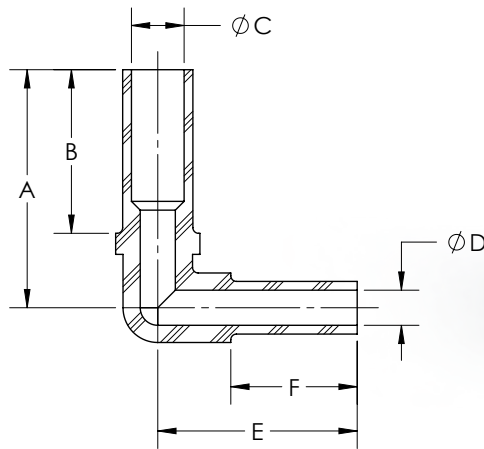
| Weld Straight Reducer (Tube x Tube) | | | | | | |
|--|-----------|------|-----|-----------|-----------|-----|
| PFA Part No. | Tube OD | A | B | C Orifice | D Orifice | E |
| WSR6TS4TS | 3/8 x 1/4 | 1.63 | .55 | .25 | .15 | .83 |
| WSR8TS4TS | 1/2 x 1/4 | 1.63 | .55 | .38 | .15 | .83 |
| WSR8TS6TS | 1/2 x 3/8 | 1.53 | .55 | .38 | .25 | .73 |
| WSR12TS4TS | 3/4 x 1/4 | 1.63 | .55 | .63 | .15 | .83 |
| WSR12TS6TS | 3/4 x 3/8 | 1.53 | .55 | .63 | .25 | .73 |
| WSR12TS8TS | 3/4 x 1/2 | 1.63 | .55 | .63 | .38 | .83 |
| WSR16TS4TS | 1 x 1/4 | 1.58 | .55 | .88 | .15 | .78 |
| WSR16TS6TS | 1 x 3/8 | 1.53 | .55 | .88 | .25 | .73 |
| WSR16TS8TS | 1 x 1/2 | 1.63 | .55 | .88 | .38 | .83 |
| WSR16TS12TS | 1 x 3/4 | 1.54 | .55 | .88 | .63 | .74 |
| WSR20TS16TS | 1-1/4 x 1 | 1.66 | .76 | 1.10 | .88 | .65 |



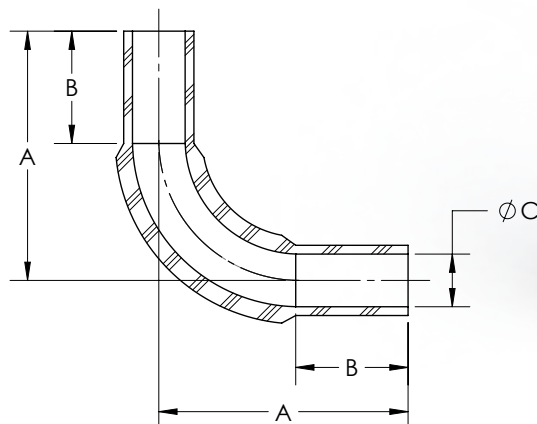
| Weld Elbow (Tube x Tube) | | | | |
|-----------------------------|---------|------|------|-----------|
| PFA Part No. | Tube OD | A | B | C Orifice |
| WE4TS | 1/4 | 1.33 | .81 | .15 |
| WE6TS | 3/8 | 1.42 | .90 | .25 |
| WE8TS | 1/2 | 1.68 | 1.16 | .38 |
| WE12TS | 3/4 | 1.87 | 1.18 | .63 |
| WE16TS | 1 | 2.31 | 1.36 | .88 |
| WE20TS | 1-1/4 | 2.56 | 1.62 | 1.10 |



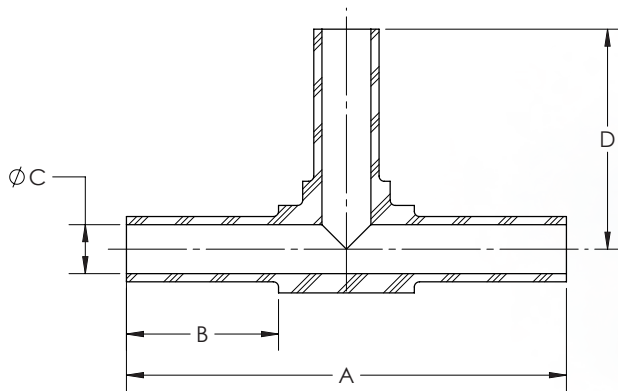
| Weld Elbow Reducer (Tube x Tube) | | | | | | | |
|-------------------------------------|-----------|------|------|-----------|-----------|------|------|
| PFA Part No. | Tube OD | A | B | C Orifice | D Orifice | E | F |
| WE6TS4TS | 3/8 x 1/4 | 1.42 | .90 | .25 | .15 | 1.33 | .81 |
| WE8TS4TS | 1/2 x 1/4 | 1.68 | 1.16 | .38 | .15 | 1.33 | .81 |
| WE8TS6TS | 1/2 x 3/8 | 1.68 | 1.16 | .38 | .25 | 1.42 | .90 |
| WE12TS8TS | 3/4 x 1/2 | 1.87 | 1.18 | .63 | .38 | 1.68 | 1.16 |
| WE16TS8TS | 1 x 1/2 | 2.31 | 1.36 | .88 | .38 | 1.68 | 1.16 |
| WE16TS12TS | 1 x 3/4 | 2.31 | 1.36 | .88 | .63 | 1.87 | 1.18 |



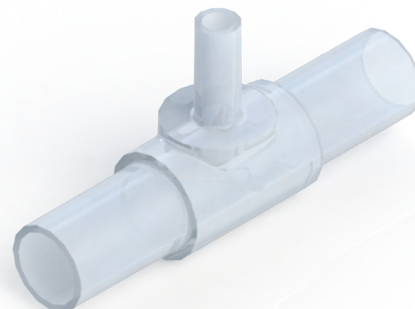
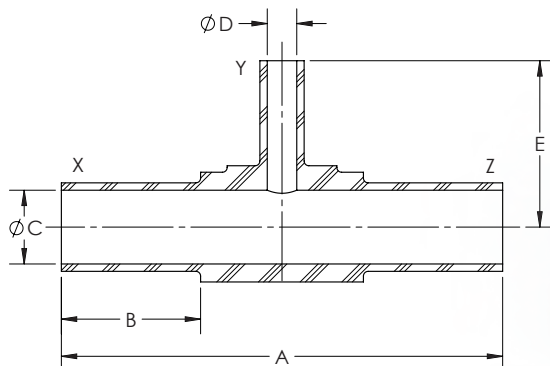
| Weld Elbow Sweep (Tube x Tube) | | | | |
|-----------------------------------|---------|------|------|-----------|
| PFA Part No. | Tube OD | A | B | C Orifice |
| WES4TS | 1/4 | 1.41 | .60 | .15 |
| WES6TS | 3/8 | 1.61 | .70 | .25 |
| WES8TS | 1/2 | 1.79 | .80 | .38 |
| WES12TS | 3/4 | 2.17 | .92 | .63 |
| WES16TS | 1 | 2.75 | 1.08 | .88 |



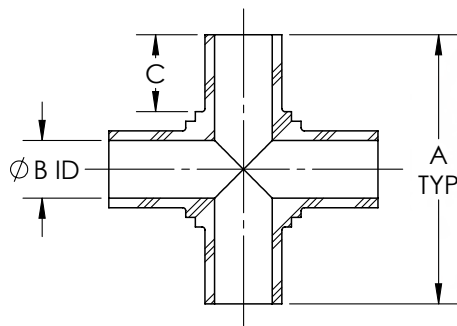
| Weld Tee (Tube x Tube x Tube) | | | | | |
|----------------------------------|---------|------|------|-----------|------|
| PFA Part No. | Tube OD | A | B | C Orifice | D |
| WT4TS | 1/4 | 2.66 | .81 | .15 | 1.33 |
| WT6TS | 3/8 | 2.82 | .90 | .25 | 1.41 |
| WT8TS | 1/2 | 3.37 | 1.16 | .38 | 1.68 |
| WT12TS | 3/4 | 3.74 | 1.18 | .63 | 1.87 |
| WT16TS | 1 | 4.62 | 1.36 | .88 | 2.31 |
| WT20TS | 1-1/4 | 5.12 | 1.62 | 1.1 | 2.56 |



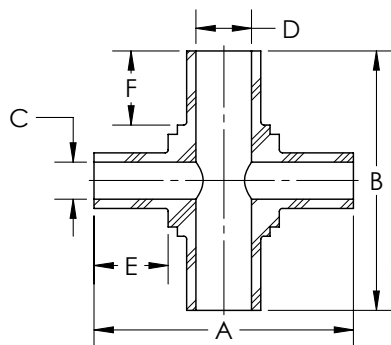
| Weld Tee Reducer (Tube x Tube x Tube) | | | | | | | | |
|--|-------|------|-------|------|------|-----------|-----------|------|
| PFA Part No. | X OD | Y OD | Z OD | A | B | C Orifice | D Orifice | E |
| WT6TS-4TS-6TS | 3/8 | 1/4 | 3/8 | 2.82 | .90 | .25 | .15 | 1.33 |
| WT8TS-4TS-8TS | 1/2 | 1/4 | 1/2 | 3.37 | 1.16 | .38 | .15 | 1.33 |
| WT8TS-6TS-8TS | 1/2 | 3/8 | 1/2 | 3.37 | 1.16 | .38 | .25 | 1.41 |
| WT12TS-4TS-12TS | 3/4 | 1/4 | 3/4 | 3.74 | 1.18 | .63 | .15 | 1.33 |
| WT12TS-6TS-12TS | 3/4 | 3/8 | 3/4 | 3.74 | 1.18 | .63 | .25 | 1.41 |
| WT12TS-8TS-12TS | 3/4 | 1/2 | 3/4 | 3.74 | 1.18 | .63 | .38 | 1.68 |
| WT16TS-8TS-16TS | 1 | 1/2 | 1 | 4.62 | 1.36 | .88 | .38 | 1.68 |
| WT16TS-12TS-16TS | 1 | 3/4 | 1 | 4.62 | 1.36 | .88 | .63 | 1.87 |
| WT20TS-16TS-20TS | 1-1/4 | 1 | 1-1/4 | 5.12 | 1.62 | 1.10 | .88 | 2.56 |



| Weld Cross (All Tube) | | | | |
|--------------------------|---------|------|------|-----|
| PFA Part No. | Tube OD | A | B | C |
| WX4TS | 1/4 | 1.75 | .16 | .50 |
| WX6TS | 3/8 | 1.75 | .25 | .50 |
| WX8TS | 1/2 | 1.75 | .38 | .50 |
| WX20TS | 1-1/4 | 2.64 | 1.10 | .63 |



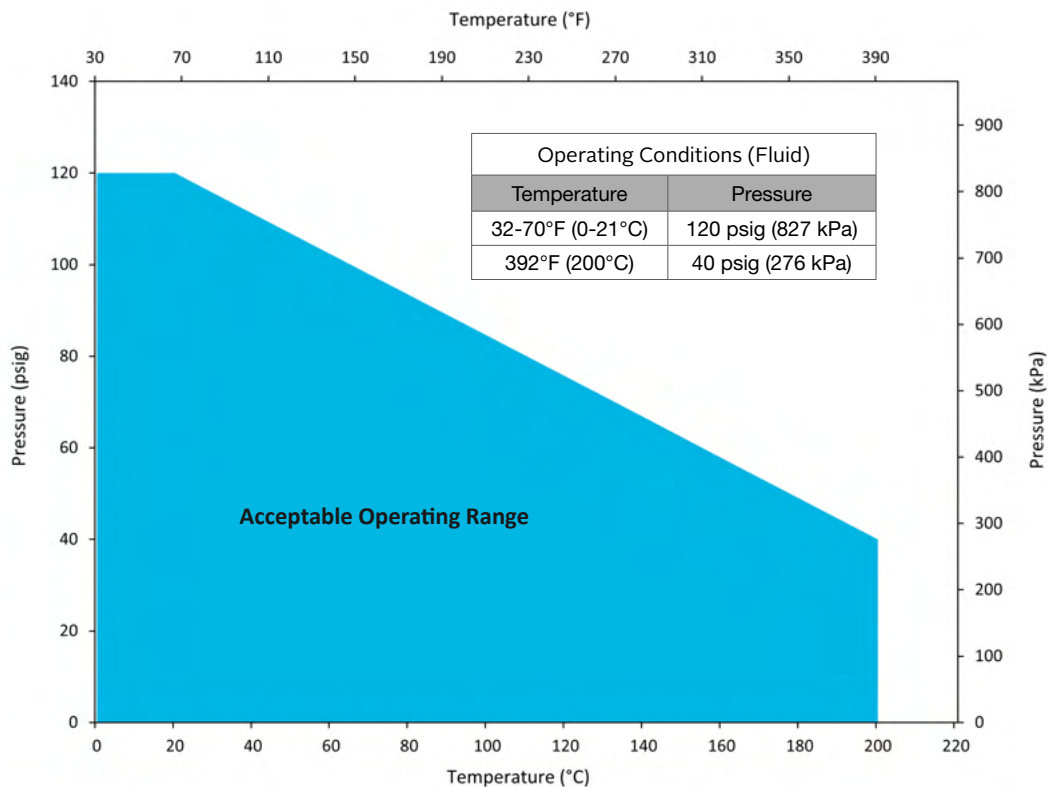
| Weld Cross Reducer (All Tube) | | | | | | | |
|----------------------------------|-----------|------|------|-----|-----|-----|-----|
| PFA Part No. | Tube OD | A | B | C | D | E | F |
| WX6TS4TS | 3/8 X 1/4 | 1.75 | 1.75 | .25 | .16 | .50 | .50 |
| WX8TS6TS | 1/2 X 3/8 | 1.75 | 1.75 | .38 | .25 | .50 | .50 |
| WX12TS8TS | 3/4 X 1/2 | 2.00 | 2.00 | .63 | .38 | .49 | .49 |
| WX16TS12TS | 1 X 3/4 | 2.06 | 2.20 | .88 | .63 | .45 | .51 |



NexusConnect® WELD CONNECTORS

Weld Connect offers a convenient method for transitioning from a welded connection to Fit-Line's robust NEXUS Connect insert fittings. Weld Connect fittings are suitable for high purity, corrosive chemical handling applications that are required in the semiconductor industry.

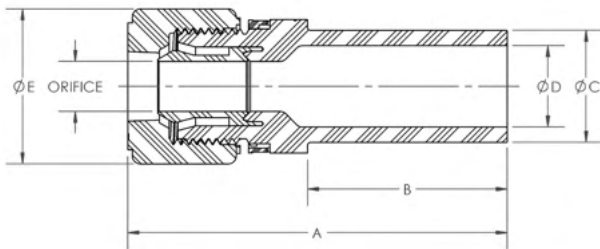
ACCEPTABLE OPERATING RANGE



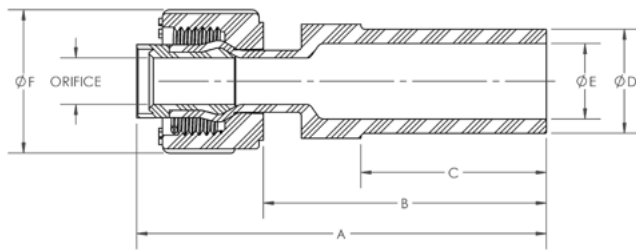
| Acceptable PFA Tube Dimensions | | |
|--------------------------------|--------------|-------------|
| Tube Size | O.D. | Thickness |
| 1/4" x 5/32" | .250 ± .004 | .047 ± .004 |
| 3/8" x 1/4" | .375 ± .005 | .063 ± .005 |
| 1/2" x 3/8" | .500 ± .005 | .063 ± .005 |
| 3/4" x 5/8" | .750 ± .005 | .063 ± .005 |
| 1" x 7/8" | 1.000 ± .008 | .063 ± .005 |

Weld Straight Connector
(Pipe x Male)

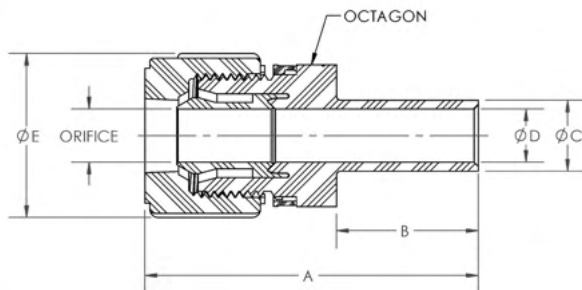
| Part No. | Pipe Size | Tube Size | Orifice | A | B | C | D | E | Octagon |
|------------------|-----------|--------------|---------|------|------|------|------|------|---------|
| NXG-WSC4P-4N-3 | 1/4" | 1/4" x 5/32" | .15 | 1.58 | .55 | .54 | .35 | .68 | .59 |
| NXG-WSC4P-6N-3 | 1/4" | 3/8" x 1/4" | .25 | 1.75 | .55 | .54 | .35 | .97 | .83 |
| NXG-WSC4P-8N-3 | 1/4" | 1/2" x 3/8" | .35 | 1.90 | .55 | .54 | .35 | 1.16 | 1.00 |
| NXG-WSC8P-4N-3 | 1/2" | 1/4" x 5/32" | .15 | 2.65 | 1.50 | .84 | .61 | .68 | 1.00 |
| NXG-WSC8P-6N-3 | 1/2" | 3/8" x 1/4" | .25 | 2.82 | 1.50 | .84 | .61 | .97 | 1.00 |
| NXG-WSC8P-8N-3 | 1/2" | 1/2" x 3/8" | .38 | 2.85 | 1.50 | .84 | .61 | 1.16 | 1.00 |
| NXG-WSC8P-12N-3 | 1/2" | 3/4" x 5/8" | .61 | 3.22 | 1.50 | .84 | .61 | 1.56 | 1.32 |
| NXG-WSC12P-4N-3 | 3/4" | 1/4" x 5/32" | .15 | 2.65 | 1.50 | 1.05 | .81 | .68 | 1.32 |
| NXG-WSC12P-6N-3 | 3/4" | 3/8" x 1/4" | .25 | 2.82 | 1.50 | 1.05 | .81 | .97 | 1.32 |
| NXG-WSC12P-8N-3 | 3/4" | 1/2" x 3/8" | .38 | 2.97 | 1.50 | 1.05 | .81 | 1.16 | 1.32 |
| NXG-WSC12P-12N-3 | 3/4" | 3/4" x 5/8" | .63 | 3.22 | 1.50 | 1.05 | .81 | 1.56 | 1.32 |
| NXG-WSC12P-16N-3 | 3/4" | 1" x 7/8" | .81 | 3.52 | 1.50 | 1.05 | .81 | 1.97 | 1.70 |
| NXG-WSC16P-8N-3 | 1" | 1/2" x 3/8" | .38 | 2.97 | 1.50 | 1.32 | 1.03 | 1.16 | 1.70 |
| NXG-WSC16P-12N-3 | 1" | 3/4" x 5/8" | .63 | 3.42 | 1.50 | 1.32 | 1.03 | 1.56 | 1.70 |
| NXG-WSC16P-16N-3 | 1" | 1" x 7/8" | .88 | 3.62 | 1.50 | 1.32 | 1.03 | 1.97 | 1.70 |



| Weld Straight Connector (TightINSERT) (Pipe x Female) | | | | | | | | | |
|--|-----------|-----------------|---------|------|------|------|------|------|------|
| Part No. | Pipe Size | Connection Size | Orifice | A | B | C | D | E | F |
| NXG-WSC4P-4TN-3 | 1/4" | 1/4" | .15 | 1.72 | 1.04 | .55 | .54 | .35 | .68 |
| NXG-WSC4P-6TN-3 | 1/4" | 3/8" | .25 | 1.86 | 1.03 | .55 | .54 | .35 | .97 |
| NXG-WSC8P-6TN-3 | 1/2" | 3/8" | .25 | 3.00 | 2.17 | 1.50 | .84 | .61 | .97 |
| NXG-WSC8P-8TN-3 | 1/2" | 1/2" | .38 | 3.31 | 2.29 | 1.50 | .84 | .61 | 1.16 |
| NXG-WSC12P-8TN-3 | 3/4" | 1/2" | .38 | 3.31 | 2.29 | 1.50 | 1.05 | .81 | 1.16 |
| NXG-WSC12P-12TN-3 | 3/4" | 3/4" | .63 | 3.35 | 2.12 | 1.50 | 1.05 | .81 | 1.56 |
| NXG-WSC12P-16TN-3 | 3/4" | 1" | .88 | 3.60 | 2.16 | 1.50 | 1.05 | .81 | 1.97 |
| NXG-WSC16P-12TN-3 | 1" | 3/4" | .63 | 3.35 | 2.12 | 1.50 | 1.32 | 1.03 | 1.56 |
| NXG-WSC16P-16TN-3 | 1" | 1" | .88 | 3.58 | 2.14 | 1.50 | 1.32 | 1.03 | 1.97 |

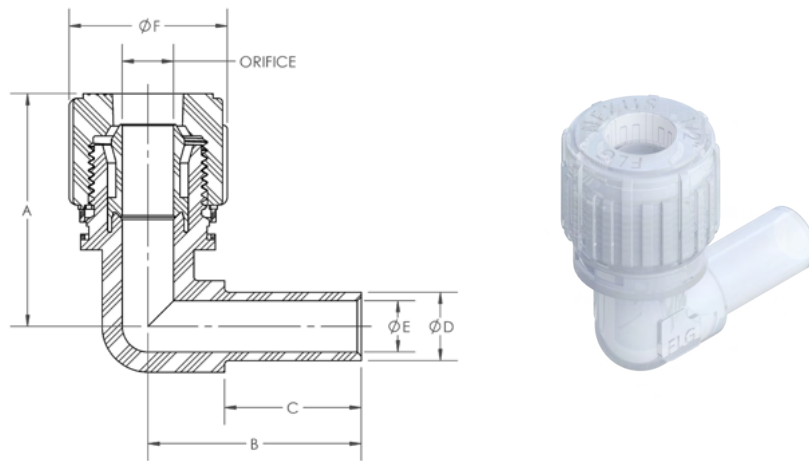


| Weld Straight Connector (Tube x Male) | | | | | | | | | |
|--|--------------------|--------------|---------|------|------|------|-----|------|---------|
| Part No. | Tube Straight Size | Tube Size | Orifice | A | B | C | D | E | Octagon |
| NXG-WSC4TS-4N-3 | 1/4" | 1/4" x 5/32" | .15 | 1.73 | .70 | .25 | .15 | .68 | .59 |
| NXG-WSC6TS-4N-3 | 3/8" | 1/4" x 5/32" | .15 | 1.88 | .85 | .38 | .25 | .68 | .59 |
| NXG-WSC6TS-6N-3 | 3/8" | 3/8" x 1/4" | .25 | 2.05 | .85 | .38 | .25 | .97 | .83 |
| NXG-WSC8TS-8N-3 | 1/2" | 1/2" x 3/8" | .38 | 2.35 | 1.00 | .50 | .38 | 1.16 | 1.00 |
| NXG-WSC8TS-12N-3 | 1/2" | 3/4" x 5/8" | .38 | 2.72 | 1.00 | .50 | .38 | 1.56 | 1.32 |
| NXG-WSC12TS-8N-3 | 3/4" | 1/2" x 3/8" | .38 | 2.53 | 1.18 | .75 | .63 | 1.16 | .98 |
| NXG-WSC12TS-12N-3 | 3/4" | 3/4" x 5/8" | .63 | 2.90 | 1.18 | .75 | .63 | 1.56 | 1.32 |
| NXG-WSC16TS-8N-3 | 1" | 1/2" x 3/8" | .38 | 2.87 | 1.40 | 1.00 | .88 | 1.16 | 1.32 |
| NXG-WSC16TS-12N-3 | 1" | 3/4" x 5/8" | .63 | 3.12 | 1.40 | 1.00 | .88 | 1.56 | 1.32 |
| NXG-WSC16TS-16N-3 | 1" | 1" x 7/8" | .88 | 3.42 | 1.40 | 1.00 | .88 | 1.97 | 1.70 |



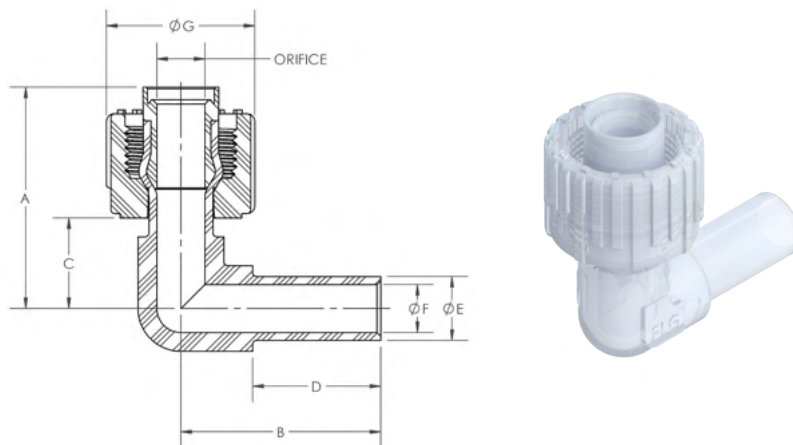
Weld Elbow Connector
(Tube x Male)

| Part No. | Tube Straight Size | Tube Size | Orifice | A | B | C | D | E | F |
|-------------------|--------------------|--------------|---------|------|------|------|------|-----|------|
| NXG-WEC4TS-4N-3 | 1/4" | 1/4" x 5/32" | .15 | 1.17 | 1.07 | .70 | .25 | .15 | .68 |
| NXG-WEC6TS-6N-3 | 3/8" | 3/8" x 1/4" | .25 | 1.49 | 1.35 | .85 | .38 | .25 | .97 |
| NXG-WEC8TS-8N-3 | 1/2" | 1/2" x 3/8" | .38 | 1.70 | 1.56 | 1.00 | .50 | .38 | 1.16 |
| NXG-WEC12TS-8N-3 | 3/4" | 1/2" x 3/8" | .38 | 1.70 | 1.90 | 1.18 | .75 | .63 | 1.16 |
| NXG-WEC12TS-12N-3 | 3/4" | 3/4" x 5/8" | .63 | 2.14 | 1.90 | 1.18 | .75 | .63 | 1.56 |
| NXG-WEC16TS-8N-3 | 1" | 1/2" x 3/8" | .38 | 1.70 | 2.31 | 1.40 | 1.00 | .88 | 1.16 |
| NXG-WEC16TS-12N-3 | 1" | 3/4" x 5/8" | .63 | 2.14 | 2.31 | 1.40 | 1.00 | .88 | 1.56 |
| NXG-WEC16TS-16N-3 | 1" | 1" x 7/8" | .88 | 2.55 | 2.31 | 1.40 | 1.00 | .88 | 1.97 |



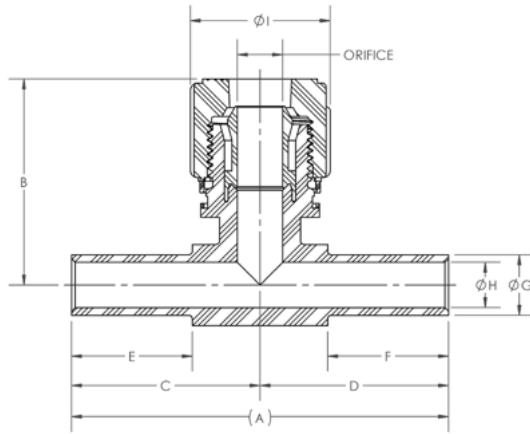
Weld Elbow Connector (TightINSERT)
(Tube x Female)

| Part No. | Tube Straight Size | Connection Size | Orifice | A | B | C | D | E | F | G |
|--------------------|--------------------|-----------------|---------|------|------|------|------|------|-----|------|
| NXG-WEC4TS-4TN-3 | 1/4" | 1/4" | .15 | 1.14 | 1.07 | .46 | .70 | .25 | .15 | .68 |
| NXG-WEC6TS-6TN-3 | 3/8" | 3/8" | .25 | 1.47 | 1.35 | .64 | .85 | .38 | .25 | .97 |
| NXG-WEC8TS-8TN-3 | 1/2" | 1/2" | .38 | 1.73 | 1.56 | .71 | 1.00 | .50 | .38 | 1.16 |
| NXG-WEC12TS-12TN-3 | 3/4" | 3/4" | .63 | 2.10 | 1.90 | .87 | 1.18 | .75 | .63 | 1.56 |
| NXG-WEC16TS-16TN-3 | 1" | 1" | .88 | 2.55 | 2.31 | 1.11 | 1.40 | 1.00 | .88 | 1.97 |



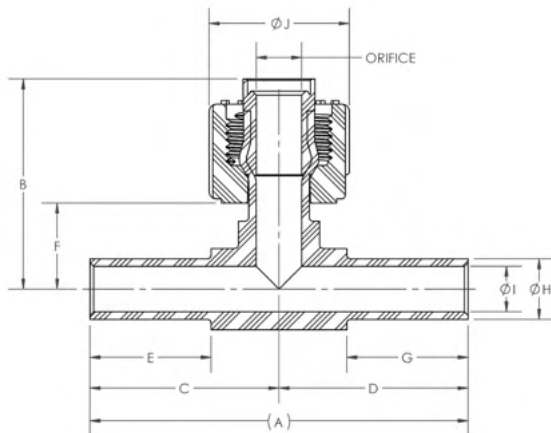
Weld Tee Connector
(Tube x Male x Tube)

| Part No. | Leg 1 Tube Straight Size | Leg 2 Tube Size | Leg 3 Tube Straight Size | Orifice | A | B | C | D | E | F | G | H | I |
|------------------------|--------------------------|-----------------|--------------------------|---------|------|------|------|------|------|------|------|-----|------|
| NXG-WTC4TS-4-4TSN-3 | 1/4" | 1/4" x 5/32" | 1/4" | .15 | 2.14 | 1.17 | 1.07 | 1.07 | .70 | .70 | .25 | .15 | .68 |
| NXG-WTC6TS-4-6TSN-3 | 3/8" | 1/4" x 5/32" | 3/8" | .15 | 2.69 | 1.17 | 1.35 | 1.35 | .85 | .85 | .38 | .25 | .68 |
| NXG-WTC6TS-6-6TSN-3 | 3/8" | 3/8" x 1/4" | 3/8" | .25 | 2.69 | 1.49 | 1.35 | 1.35 | .85 | .85 | .38 | .25 | .97 |
| NXG-WTC8TS-8-8TSN-3 | 1/2" | 1/2" x 3/8" | 1/2" | .38 | 3.12 | 1.70 | 1.56 | 1.56 | 1.00 | 1.00 | .50 | .38 | 1.16 |
| NXG-WTC12TS-8-12TSN-3 | 3/4" | 1/2" x 3/8" | 3/4" | .38 | 3.80 | 1.95 | 1.90 | 1.90 | 1.18 | 1.18 | .75 | .63 | 1.16 |
| NXG-WTC12TS-12-12TSN-3 | 3/4" | 3/4" x 5/8" | 3/4" | .63 | 3.80 | 2.14 | 1.90 | 1.90 | 1.18 | 1.18 | .75 | .63 | 1.56 |
| NXG-WTC16TS-12-16TSN-3 | 1" | 3/4" x 5/8" | 1" | .63 | 4.61 | 2.36 | 2.31 | 2.31 | 1.40 | 1.40 | 1.00 | .88 | 1.56 |
| NXG-WTC16TS-16-16TSN-3 | 1" | 1" x 7/8" | 1" | .88 | 4.61 | 2.55 | 2.31 | 2.31 | 1.40 | 1.40 | 1.00 | .88 | 1.97 |



Weld Tee Connector (TightINSERT)
(Tube x Female x Tube)

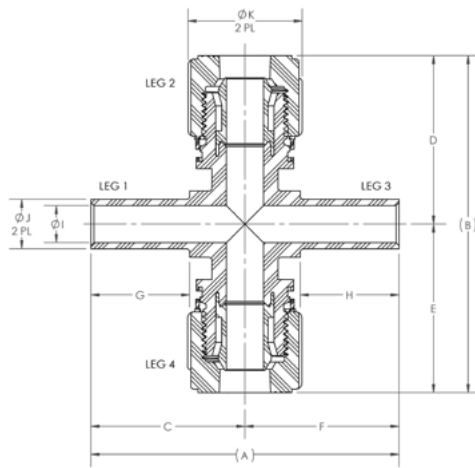
| Part No. | Leg 1 Tube Straight Size | Leg 2 Connection Size | Leg 3 Tube Straight Size | Orifice | A | B | C | D | E | F | G | H | I | J |
|-------------------------|--------------------------|-----------------------|--------------------------|---------|------|------|------|------|------|------|------|------|-----|------|
| NXG-WTC4TS-4T-4TSN-3 | 1/4" | 1/4" | 1/4" | .15 | 2.14 | 1.14 | 1.07 | 1.07 | .70 | .46 | .70 | .25 | .15 | .68 |
| NXG-WTC6TS-6T-6TSN-3 | 3/8" | 3/8" | 3/8" | .25 | 2.69 | 1.47 | 1.35 | 1.35 | .85 | .64 | .85 | .38 | .25 | .97 |
| NXG-WTC8TS-8T-8TSN-3 | 1/2" | 1/2" | 1/2" | .38 | 3.12 | 1.73 | 1.56 | 1.56 | 1.00 | .71 | 1.00 | .50 | .38 | 1.16 |
| NXG-WTC12TS-12T-12TSN-3 | 3/4" | 3/4" | 3/4" | .63 | 3.80 | 2.14 | 1.90 | 1.90 | 1.18 | .87 | 1.18 | .75 | .63 | 1.56 |
| NXG-WTC16TS-16T-16TSN-3 | 1" | 1" | 1" | .88 | 4.61 | 2.55 | 2.31 | 2.31 | 1.40 | 1.11 | 1.40 | 1.00 | .88 | 1.97 |



Weld Cross Connector

(Male x Tube x Male x Tube)

| Part No. | Leg 1 Tube Straight Size | Leg 2 Tube Size | Leg 3 Tube Straight Size | Leg 4 Tube Size | Orifice | A | B | C | D | E | F | G | H | I | J | K |
|---------------------------|--------------------------|-----------------|--------------------------|-----------------|---------|------|------|------|------|------|------|------|------|------|-----|------|
| NXG-WXC4TS-4-4TS-4N-3 | 1/4" | 1/4" x 5/32" | 1/4" | 1/4" x 5/32" | .15 | 2.14 | 2.34 | 1.07 | 1.17 | 1.17 | 1.07 | .70 | .70 | .25 | .15 | .68 |
| NXG-WXC6TS-6-6TS-6N-3 | 3/8" | 3/8" x 1/4" | 3/8" | 3/8" x 1/4" | .25 | 2.69 | 2.97 | 1.35 | 1.49 | 1.49 | 1.35 | .85 | .85 | .38 | .25 | .97 |
| NXG-WXC8TS-8-8TS-8N-3 | 1/2" | 1/2" x 3/8" | 1/2" | 1/2" x 3/8" | .38 | 3.12 | 3.41 | 1.56 | 1.70 | 1.70 | 1.56 | 1.00 | 1.00 | .50 | .38 | 1.16 |
| NXG-WXC12TS-12-12TS-12N-3 | 3/4" | 3/4" x 5/8" | 3/4" | 3/4" x 5/8" | .63 | 3.80 | 4.27 | 1.90 | 2.14 | 2.14 | 1.90 | 1.18 | 1.18 | .75 | .63 | 1.56 |
| NXG-WXC16TS-16-16TS-16N-3 | 1" | 1" x 7/8" | 1" | 1" x 7/8" | .88 | 4.61 | 5.09 | 2.31 | 2.55 | 2.55 | 2.31 | 1.40 | 1.40 | 1.00 | .88 | 1.97 |

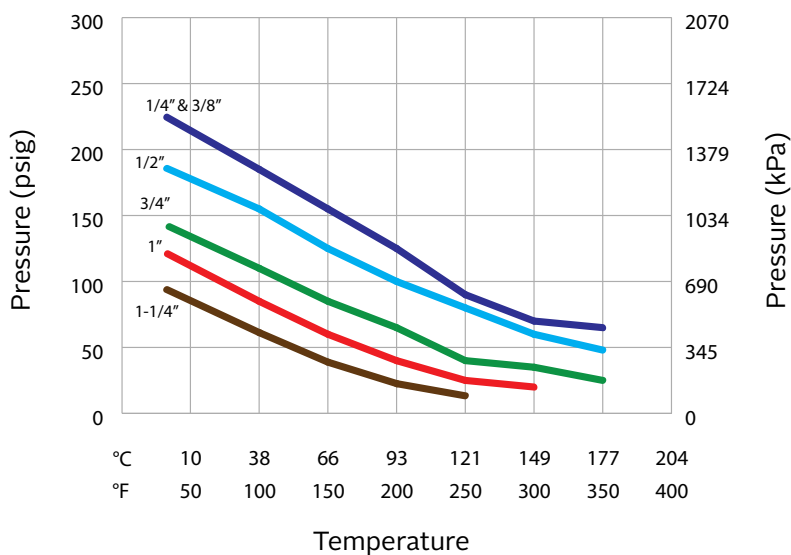


Flare Link™ WELD CONNECTORS

Weld Connect offers a convenient method for transitioning from a welded connection to Fit-Line's precision Flare Link flare fittings. Weld Connect fittings are suitable for high purity, corrosive chemical handling applications that are required in the semiconductor industry.

ACCEPTABLE OPERATING RANGE

**PFA Fittings
Pressure vs. Temperature**

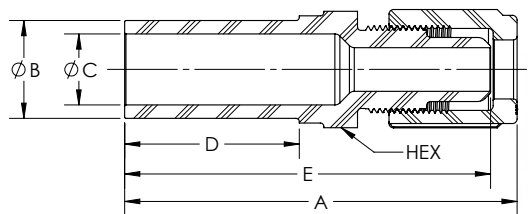


Pressure ratings based on the following tube wall thickness:

| Flare Size | Tube Wall Thickness |
|------------|---------------------|
| 1/4" | .047" |
| 3/8" | .063" |
| 1/2" | .063" |
| 3/4" | .063" |
| 1" | .063" |
| 1-1/4" | .075" |

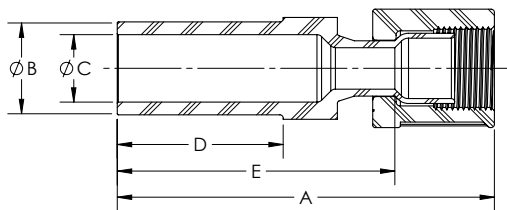
Weld Straight Connector (Pipe x Male Flare)

| PFA Part No. | Pipe Size | Tube Size | Orifice | A | B | C | D | E | Hex |
|--------------|-----------|-----------|---------|------|------|------|------|------|--------|
| WSC4P-4N-1 | 1/4 | 1/4 | .15 | 2.02 | .54 | .35 | .55 | 1.83 | 5/8 |
| WSC4P-6N-1 | 1/4 | 3/8 | .25 | 2.12 | .54 | .35 | .55 | 1.89 | 13/16 |
| WSC4P-8N-1 | 1/4 | 1/2 | .35 | 2.21 | .54 | .35 | .55 | 1.99 | 13/16 |
| WSC8P-4N-1 | 1/2 | 1/4 | .15 | 3.15 | .84 | .61 | 1.50 | 2.96 | 1 |
| WSC8P-6N-1 | 1/2 | 3/8 | .25 | 3.26 | .84 | .61 | 1.50 | 3.03 | 1 |
| WSC8P-8N-1 | 1/2 | 1/2 | .38 | 3.36 | .84 | .61 | 1.50 | 3.14 | 1 |
| WSC8P-12N-1 | 1/2 | 3/4 | .61 | 3.50 | .84 | .61 | 1.50 | 3.27 | 1-3/16 |
| WSC12P-4N-1 | 3/4 | 1/4 | .15 | 3.15 | 1.05 | .81 | 1.50 | 2.96 | 1-3/16 |
| WSC12P-6N-1 | 3/4 | 3/8 | .25 | 3.26 | 1.05 | .81 | 1.50 | 3.03 | 1-3/16 |
| WSC12P-8N-1 | 3/4 | 1/2 | .38 | 3.36 | 1.05 | .81 | 1.50 | 3.14 | 1-3/16 |
| WSC12P-12N-1 | 3/4 | 3/4 | .63 | 3.50 | 1.05 | .81 | 1.50 | 3.27 | 1-3/16 |
| WSC12P-16N-1 | 3/4 | 1 | .81 | 3.71 | 1.05 | .81 | 1.50 | 3.44 | 1-7/16 |
| WSC16P-8N-1 | 1 | 1/2 | .38 | 2.63 | 1.32 | 1.05 | 1.50 | 2.41 | 1-7/16 |
| WSC16P-12N-1 | 1 | 3/4 | .63 | 3.50 | 1.32 | 1.03 | 1.50 | 3.27 | 1-7/16 |
| WSC16P-16N-1 | 1 | 1 | .88 | 3.71 | 1.32 | 1.03 | 1.50 | 3.44 | 1-7/16 |

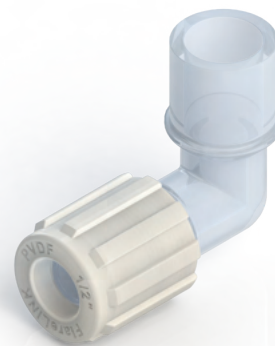
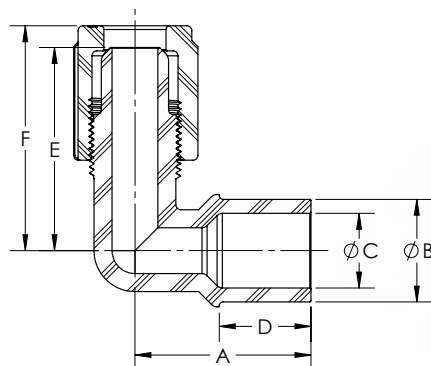


Weld Straight Connector (TightFLARE) Patented
(Pipe x Female Flare)

| PFA Part No. | Pipe Size | TightFLARE | Orifice | A | B | C | D | E |
|---------------|-----------|------------|---------|------|------|------|------|------|
| WSC4P-4TN-1 | 1/4 | 1/4 | .15 | 2.17 | .54 | .35 | .55 | 1.40 |
| WSC4P-6TN-1 | 1/4 | 3/8 | .25 | 2.21 | .54 | .35 | .55 | 1.36 |
| WSC8P-6TN-1 | 1/2 | 3/8 | .25 | 3.38 | .84 | .61 | 1.50 | 2.53 |
| WSC8P-8TN-1 | 1/2 | 1/2 | .38 | 3.42 | .84 | .61 | 1.50 | 2.52 |
| WSC8P-12TN-1 | 1/2 | 3/4 | .61 | 3.58 | .84 | .61 | 1.50 | 2.53 |
| WSC12P-8TN-1 | 3/4 | 1/2 | .38 | 3.42 | 1.05 | .81 | 1.50 | 2.52 |
| WSC12P-12TN-1 | 3/4 | 3/4 | .63 | 3.58 | 1.05 | .81 | 1.50 | 2.53 |
| WSC12P-16TN-1 | 3/4 | 1 | .81 | 4.02 | 1.05 | .81 | 1.50 | 2.68 |
| WSC16P-8TN-1 | 1 | 1/2 | .38 | 3.42 | 1.32 | 1.03 | 1.50 | 2.52 |
| WSC16P-12TN-1 | 1 | 3/4 | .63 | 3.58 | 1.32 | 1.03 | 1.50 | 2.53 |
| WSC16P-16TN-1 | 1 | 1 | .88 | 4.02 | 1.32 | 1.03 | 1.50 | 2.68 |
| WSC16P-20TN-1 | 1 | 1-1/4 | 1.03 | 4.44 | 1.32 | 1.03 | 1.50 | 3.14 |

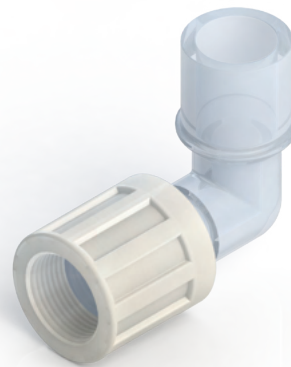
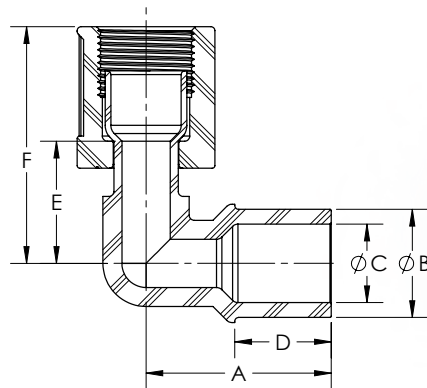


| Weld Elbow Connector (Pipe x Male Flare) | | | | | | | | | |
|---|-----------|-----------|---------|------|------|------|------|------|------|
| PFA Part No. | Pipe Size | Tube Size | Orifice | A | B | C | D | E | F |
| WEC4P-4N-1 | 1/4 | 1/4 | .15 | 1.27 | .54 | .35 | .75 | 1.47 | 1.66 |
| WEC4P-6N-1 | 1/4 | 3/8 | .25 | 1.27 | .54 | .35 | .75 | 1.53 | 1.76 |
| WEC8P-4N-1 | 1/2 | 1/4 | .15 | 1.44 | .84 | .61 | .75 | 1.47 | 1.66 |
| WEC8P-6N-1 | 1/2 | 3/8 | .25 | 1.44 | .84 | .61 | .75 | 1.53 | 1.76 |
| WEC8P-8N-1 | 1/2 | 1/2 | .38 | 1.44 | .84 | .61 | .75 | 1.65 | 1.87 |
| WEC8P-12N-1 | 1/2 | 3/4 | .61 | 1.50 | .84 | .61 | .79 | 1.99 | 2.22 |
| WEC12P-4N-1 | 3/4 | 1/4 | .15 | 1.71 | 1.05 | .81 | .84 | 1.47 | 1.66 |
| WEC12P-8N-1 | 3/4 | 1/2 | .38 | 1.71 | 1.05 | .81 | .84 | 1.65 | 1.87 |
| WEC12P-12N-1 | 3/4 | 3/4 | .63 | 1.71 | 1.05 | .81 | .84 | 1.99 | 2.22 |
| WEC12P-16N-1 | 3/4 | 1 | .63 | 1.71 | 1.05 | .81 | 1.05 | 2.43 | 2.70 |
| WEC16P-8N-1 | 1 | 1/2 | .38 | 1.72 | 1.32 | 1.03 | .75 | 1.82 | 1.87 |
| WEC16P-12N-1 | 1 | 3/4 | .63 | 1.72 | 1.32 | 1.03 | .75 | 1.99 | 2.22 |
| WEC16P-16N-1 | 1 | 1 | .88 | 1.72 | 1.32 | 1.03 | .75 | 2.43 | 2.70 |



Weld Elbow Connector (TightFLARE) Patented
(Pipe x Female Flare)

| PFA Part No. | Pipe Size | TightFLARE | Orifice | A | B | C | D | E | F |
|---------------|-----------|------------|---------|------|------|------|------|------|------|
| WEC4P-4TN-1 | 1/4 | 1/4 | .15 | 1.27 | .54 | .35 | .75 | .87 | 1.64 |
| WEC4P-6TN-1 | 1/4 | 3/8 | .25 | 1.27 | .54 | .35 | .75 | .88 | 1.73 |
| WEC8P-4TN-1 | 1/2 | 1/4 | .15 | 1.44 | .84 | .61 | .75 | .87 | 1.64 |
| WEC8P-6TN-1 | 1/2 | 3/8 | .25 | 1.44 | .84 | .61 | .75 | .88 | 1.73 |
| WEC8P-8TN-1 | 1/2 | 1/2 | .38 | 1.44 | .84 | .61 | .75 | .94 | 1.84 |
| WEC8P-12TN-1 | 1/2 | 3/4 | .61 | 1.50 | .84 | .61 | .79 | 1.08 | 2.13 |
| WEC12P-8TN-1 | 3/4 | 1/2 | .38 | 1.71 | 1.05 | .81 | .84 | .94 | 1.84 |
| WEC12P-12TN-1 | 3/4 | 3/4 | .63 | 1.71 | 1.05 | .81 | .84 | 1.08 | 2.13 |
| WEC12P-16TN-1 | 3/4 | 1 | .81 | 1.71 | 1.05 | .81 | 1.05 | 1.40 | 2.74 |
| WEC16P-12TN-1 | 1 | 3/4 | .63 | 1.72 | 1.32 | 1.03 | .75 | 1.08 | 2.13 |
| WEC16P-16TN-1 | 1 | 1 | .88 | 1.72 | 1.32 | 1.03 | .75 | 1.40 | 2.74 |



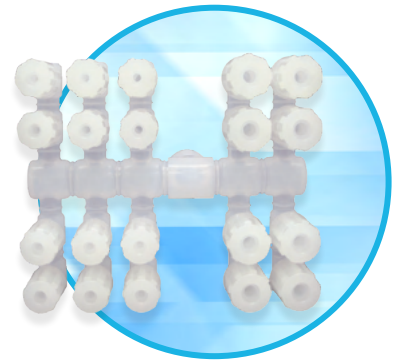
Flare Link™

WELDED SYSTEMS FABRICATED MANIFOLDS

Rapid turnaround from your concept to finished, welded manifold.

From concept to CAD model, fabrication and delivery, Fit-Line Global provides a turn-key solution for fast turnaround of customer-specified manifolds. With over 30 years of fluoropolymer and injection molding expertise, Fit-Line Global's proprietary, patented methods reduce the time needed to create custom manifolds for your application needs.

Manufactured from high purity virgin PFA and PVDF resins in dedicated molds and process equipment, Fit-Line Global's custom manifolds are designed to maximize throughput of aggressive chemistry and ultra-pure water applications, they are available from 1/4 inch to 1-1/2 inch in diameter.





U.S. DESIGNED & MANUFACTURED SOLUTIONS FOR FLUID PROCESSING APPLICATIONS



At Fit-Line Global, we engineer and supply the industry's most popular fitting configurations. That means when you need a fitting, it's available and ready to ship, allowing you to stay up and running and avoid costly delays.

From standard fittings and patented tube flaring systems, to customized designs that are developed, fabricated and tested in our state-of-the-art facility, Fit-Line Global has the expertise and the know-how to ensure you get the most reliable, dependable components delivered on time, all the time. At our core, we're a company of problem solvers.

Our employees are comprised of some of the best U.S. mechanical engineers, fabricators, senior toolmakers and process technicians with the curiosity, talent, insights and ideas to create the most advanced, dependable and leak-free solutions for all of your fluid processing needs.



FULL PRODUCT AND PACKAGING TRACEABILITY. ZERO COMPROMISES.

Having our materials, manufacturing and packaging in a fully traceable, closed-source system ensures the highest level of protection, component quality and contamination control.

That's why Fit-Line Global employs our own proprietary cleaning and packaging processes—including our five stage component cleaning and rinsing procedure—all conducted in our very own Class 1000 Clean Room.

And when it comes to packaging, all of our fittings are double polyethylene bagged per SEMI-F57 standards. This will meet and exceed your exacting demands. Anything else simply won't do.



DEDICATED TO YOU

Being an ISO 9001:2015 certified company means that we consistently provide products and services that meet customer and regulatory requirements and demonstrate continuous improvement. The certification acts as an assurance that our products are being manufactured in a facility that meets the requirements of ISO a well-known quality management system standard, and is reviewed yearly by an independent auditor.

WARRANTY

Fit-Line Global warrants to the BUYER that any product sold will be free from defects in material or workmanship for a period of twelve (12) months from the date of shipment. If during the warranty period, the BUYER notifies Fit-Line Global of a defect, Fit-Line Global shall, at its option, repair or replace the defective material or workmanship. OTHER THAN AS EXPRESSLY STATED HEREIN, FIT-LINE GLOBAL MAKES NO OTHER WARRANTIES, EXPRESS OR IMPLIED, REGARDING THE PRODUCTS AND/OR SERVICES PROVIDED HEREUNDER, AND EXPRESSLY DISCLAIMS THE IMPLIED WARRANTIES OF NON-INFRINGEMENT, MERCHANTABILITY AND FITNESS FOR A PARTICULAR PURPOSE. The BUYER shall bear the cost of freight to and from Fit-Line Global's plant. BUYER agrees to accept the limits of liability as expressed in this statement to the exclusion of any and all provisions regarding statements of liability on the BUYER's own invoices, purchase orders and/or other documents.

GOODS

All descriptions and illustrations contained in Fit-Line Global's catalog, brochures, price lists, website, advertisements and all specifications, drawings and any other documents contained therein submitted with any QUOTATION to BUYER or otherwise communicated to BUYER are intended merely to present a general idea of GOODS and SERVICES (GOODS) described therein and nothing contained in any of them shall form any part of the contract.



2901 Tech Center Drive, Santa Ana, CA 92705

Phone: (714) 549-9091

Email: info@Fit-LineGlobal.com

Web: Fit-LineGlobal.com